



# CATHOLIC HIGH SCHOOL NEWSLETTER

From the Office of the Principal

www.catholichigh.org

August 1, 2016

## **WELCOME TO THE 123rd YEAR OF OPERATION OF CATHOLIC HIGH SCHOOL!**

On behalf of the faculty and staff of Catholic High School, we thank you for choosing us to be a part of your son's life during these critically important adolescent years. We view our relationship with families as a partnership in the formation of your son. Our goal is to work together with you as we help your son become the young man that God has created him to be.

**THE MISSION OF CATHOLIC HIGH SCHOOL:** The mission of Catholic High School is to teach Gospel values in an environment of academic excellence according to Catholic tradition and the spirit of the Brothers of the Sacred Heart.

We are dedicated to continuing the mission and charism of the Brothers of the Sacred Heart and I am confident that the 2016-2017 school year will be year full of opportunities for your son. Our priorities will always center on fulfilling the Brothers' mission and in helping your son achieve his full potential.

**PARENT PARTICIPATION IN SCHOOL EVENTS:** In an effort to help keep parents connected with Catholic High, we have numerous opportunities throughout the school year for parents to participate in the life of the school community. Please check the school calendar for all events and find ways to attend so as to be a part of your son's school activities. In addition to the numerous masses, prayer services, athletic events, club meetings and events, senior meetings, concerts, Mothers' Club events and Men's Club supper (just to name a few), there are some events designed specifically to keep parents informed of important information.

1. The first opportunity is Back To School Afternoon on August 14, from 3:45 – 6:26 p.m. This afternoon is intended for parents only. We ask that you report

directly to the gym for announcements and a brief presentation containing significant information for the 2016-2017 school year. This is an important presentation and we ask that you be in the gym no later than 3:45 p.m. on August 14. Following the presentation in the gym, our schedule will include 7-minute classes with 5-minute transit times. The brief class sessions provide you an excellent opportunity to meet your son's teachers and to preview the academic and behavioral expectations in each of his classes. After 3<sup>rd</sup> period, we will have another brief presentation in the gym for all parents to attend. Following the presentation, classes will resume.

One enclosure in this packet is a blank student schedule which you should ask your son to complete for your use on August 14. Please be sure to use the schedule issued to your son at orientation as it will be the most current.

Because of the large number of parents attending "Back-to-School Afternoon," I suggest you plan to arrive no later than 3:30 p.m. Parking will be available in the Main Parking Lot and Westmoreland Shopping Center in the part of the lot closest to CHS property. Security will be provided. Please do not park along the streets in the neighborhood.

The Mothers' Club invites you to have refreshments in the Union during your son's lunch period.

2. On January 4, 2017 students will not attend school. Parent-teacher conferences are scheduled that day from 7:15-9:15 a.m. to give parents the opportunity to discuss their son's first semester grades with teachers. The remainder of the day is set aside for faculty professional development.

Please take advantage of these opportunities to collaborate with your son's teachers.

**NEW CATHOLIC HIGH WEBSITE:** During the first week of July, Catholic High School launched a new website. The design is modern, user friendly, and features

responsive elements for mobile platforms. During the site's initial rollout phase, the functionality of some links may be limited, especially with the calendar feature. We are addressing these issues and anticipate having them resolved for the start of school. Please be patient during this implementation period. The address remains the same: [www.catholichigh.org](http://www.catholichigh.org).

**NEW – THE BEARS' BIN:** In response to a need in our community, Catholic High School will host a clothing drive called "The Bears' Bin," on Friday, July 29 and Saturday, July 30. This event will allow parents to donate the school clothes their son has outgrown and provide a place for Catholic High parents to "shop" for what they need. There is no charge for any clothing.

The first part of the event will take place on Friday, July 29 from 4:30 until 7:00 p.m. Families can drop off gently used CHS school clothes in the senior parking lot. Volunteers will pick up your donations. We are asking for only CHS "dress code approved" shirts, pants, belts, and suits. Please no shoes.

On Saturday, July 30, between 8:00 and 11:00 a.m., parents can come to the Library and take the clothing needed for their son as a student at Catholic High School. All clothing that remains after 11:00 a.m. on Saturday will be donated to local charities.

Please see the flyer enclosed with this newsletter. Any student or parent who would like to volunteer their time for this project are asked to do so via the SignUp Genius link that will be sent to your email address this week. If you have any questions, please contact Nancy Pacella Herin, Activities Director, at [nheirn@catholichigh.org](mailto:nheirn@catholichigh.org). Thank you in advance for your generosity.

**STUDENT SCHEDULES:** Student schedules will be available through PlusPortals at the end of July. All students will receive an email from Mr. Jared Cavalier, academic assistant principal, notifying them that schedules are available. As stated in the email, some schedules may be changed to balance class sizes. Students will receive their final schedules during orientation. According to the *Student Handbook*, "Schedule changes during the school year typically are made to adjust the level of a student's placement in a particular course." Please do not request changes of schedule in order to change an elective course, change an unassigned period or change teachers. Such requests will be denied.

**2016 - 2017 RETREAT DATES:** Please mark your calendar now for the following required attendance events for CHS students:

**Senior Retreat:** Sunday, October 16, from 9 a.m. until Monday, October 17, at 8 p.m.

**Junior Retreat:** Monday, March 20 (all day)

**Sophomore Retreat:** Monday, March 20 (all day)

**Freshman Retreat:** Friday, November 11, from 9 a.m. until 2 p.m.

**8<sup>th</sup> grade Retreat:** Tuesday, March 21 (all day)

Please do not schedule any activity that conflicts with these retreats.

**STUDENT HANDBOOK:** The *2016-2017 Student Handbook* will only be available online through the Catholic High website ([www.catholichigh.org](http://www.catholichigh.org)) later on this summer. At student orientation, your son will receive the Parent/Student Consent Form. After you and your son read the handbook, you both must sign the form and return it to school. The deadline for your son to return this signed form to the Main Office is Friday, August 12. As noted on the Parent/Student Consent Form, "Failure to respond in a timely manner could result in the student's suspension from school until the completed document is submitted."

It is essential that you and your son read the handbook very carefully. It is an excellent reference for most questions you may have about school policies and procedures. Also, the regulations and provisions outlined in the handbook are a material condition of the contractual agreement between you and Catholic High School.

**SCHOOL CALENDAR:** Catholic High School's updated school calendar is enclosed in order to help you plan your son's school year. As always, please consult the calendar when planning appointments, trips or vacations. We consider your son's attendance at school to be critical in allowing him to be academically successful.

**ORIENTATION SCHEDULE:** Orientation for all students will take place on Wednesday, August 3, and Thursday, August 4. **Your son must be present for orientation at his properly assigned time.** Disciplinary consequences will result from unexcused orientation absences. Students must be checked in and seated in the Wrestling Room by the arrival time listed below:

## 2016 – 2017 Orientation Schedule

Wednesday, August 3		
Grade	Arrival Time	Alpha Listing
10th	8:00 a.m.	A-Car
	8:30 a.m.	Cas-Ga
	9:00 a.m.	Ge-La
	9:30 a.m.	Le-O
	10:00 a.m.	P-Si
	10:30 a.m.	So-Z
	11:00 a.m.	
9th	11:30 a.m.	A-Br
	12:00 p.m.	Bu-F
	12:30 p.m.	G-K
	1:00 p.m.	L-O
	1:30 p.m.	P-T
	2:00 p.m.	U-Z
Thursday, August 4		
Grade	Arrival Time	Alpha Listing
8th	8:00 a.m.	A-Z
11th	8:30 a.m.	A-Ch
	9:00 a.m.	Co-Ha
	9:30 a.m.	He-Mc
	10:00 a.m.	Me-R
	10:30 a.m.	S-Z
	11:00 a.m.	
12th	11:30 a.m.	A-B
	12:00 p.m.	C-E
	12:30 p.m.	F-K
	1:00 p.m.	L-Mi
	1:30 p.m.	Mo-Sn
	2:00 p.m.	Sq-Z

If you are bringing your son to orientation, you are welcome to come into the Union and relax while orientation is in process, but your son must complete orientation himself, unaccompanied by you. The process typically lasts about 90 minutes.

### ORIENTATION INFORMATION:

**School Pictures:** All students are required to wear a coat and tie on the day of their orientation and to be properly groomed because school pictures will be taken at that time. If your son does not have a coat he may come with a dress shirt and tie. We have a few coats in different sizes that can be used for pictures. Please note we do not have every size.

Romaguera Photography will be taking pictures of each student during orientation. If you want to purchase pictures, please follow the directions on the order form that was sent to you from Romaguera. Please have your son bring the personalized order form to orientation with a check made payable to Romaguera Photography and give it to the photographer at the time the picture is taken, or order online.

**Note:** Seniors will be required to take school pictures at orientation that are for school use. Therefore, seniors are required to wear a coat and tie on the day of their orientation. Also, before the summer break ends, all seniors must have a formal portrait taken by Brad Messina Photography for inclusion in the CHS yearbook. Please refer to the letter from the Activities Office for more information about the senior tuxedo picture. For both pictures, hairstyles must meet CHS grooming requirements.

**Hair and Grooming Requirements:** It is particularly important that your son meets CHS grooming requirements starting at orientation. A conservative approach to the school's dressing and grooming standards is a positive way to start off the year. If your son's hairstyle does not meet CHS grooming requirements, he will not be allowed to complete orientation; in effect, he will be suspended from school until he has an acceptable haircut. Students will not be allowed to cut their own hair on campus during orientation.

For convenience, a barber will be on campus during orientation to correct hairstyles as deemed necessary by the assistant principal for discipline. Should students choose to use this service, there will be a minimal fee applied to the orientation fee bill. Catholic High does not receive any compensation for this service. It is essential that parents and students understand that haircuts given by the on-campus barber are done in an expedited manner and are not customizable. The on-campus barber is not designed to be a personal stylist for your son and Catholic High is not responsible if you or your son does not like the haircut. To avoid this issue, please ensure that your son has the appropriate hair cut before he arrives for orientation.

A student whose hair is only slightly outside of the guidelines and utilizes the barber on campus, will not receive disciplinary consequences. However, a student who arrives on campus in serious need of a haircut, well outside of our expectations, will be directed to our on-campus barber and will receive disciplinary

consequences. Your son must also be clean shaven and his sideburns must be of appropriate length. If he does not meet our expectations, he will have to shave before continuing the orientation process. Should a student choose to leave campus and stop the orientation process to correct a grooming issue, he will receive disciplinary consequences.

Any student who has altered his natural hair color will not be allowed to attend classes at CHS until it is corrected.

Past experience indicates that complying with our hair cut guidelines is the most challenging part of orientation. It is not the intent of Catholic High School to start off a new school year in a negative manner by having to send a student to get his hair cut and interrupt orientation. This often leads to frustration on the part of parents, students, and the school. Therefore, in order to avoid this frustration, I strongly encourage parents and students to make sure that your son's hair meets our guidelines: hair cannot touch the eyebrows when brushed forward, touch the back of the collar, or fall over the ears. Hair cannot be overly tall or bushy. Visible lines or shaved sides are also not within our guidelines and are not acceptable. If your son's hair does not meet these requirements, he will not be allowed to continue orientation without first complying to the standard. My advice is to get a shorter than typical haircut in order to be within our expectations. If you have any questions about whether a hairstyle is acceptable at CHS, please contact Dr. Tom Eldringhoff, assistant principal for discipline, for an appointment. Please call him in advance of your visit so he can be available.

**2017 Bruin Yearbook:** During orientation, orders can be placed for the 2016-2017 *Bruin*, our school yearbook. The cost of the book is \$48, payable at orientation. Seniors will also have the option of paying to have their yearbook mailed to them. The cost for mailing the yearbook is an additional \$6.

**Student ID/Food Service Debit Card:** During orientation, each student will receive an ID card that will serve also as his student debit card. Part of our dress and grooming policy is that all students are required to wear their student ID on a school-issued lanyard around their neck. The ID must be worn once a student arrives on campus and throughout regular school hours. Please see the Student Handbook for further details. The ID/debit card must be used for all purchases in the CHS Student Union (our cafeteria),

Bookstore, Library, Activities Office, and Help Desk. The debit card is not transferrable. If a student forgets, loses, or misplaces his ID/lanyard on any school day, he must go to the Activities Office and purchase a replacement. The cost for a replacement ID and lanyard is \$5.00.

As part of orientation expenses, each student is required to have a minimum balance of \$35 on his debit account. If your son has a credit balance on his account at the end of the school year it will remain in his account for the following year. If you know that your son will make use of the CHS food service, I recommend that you consider posting at least \$100 on his account to start the school year. Our policy is that once a debit card account reaches \$20 or less, parents will be notified by email that it is necessary to add additional money on the account. Negative balances are not allowed. Students will have disciplinary consequences for going negative on their debit card. Thank you for your attention to this important matter.

For your information, student lunch purchases typically average \$5 per person per day (of course, many students spend more money and a number spend less). Students can check the balance of their debit account at the scanner located in the Union or in the Bookstore. Parents can also check the balance online through the Catholic High website. Money can be added to the account online or may be brought to the Bookstore. Payments must be made to an account by 7:30 a.m. in order for use that day. Please note that online payments may take up to 24 hours to post.

**Parking for 2016-2017:** Only those students who pay parking fees will be allowed to park in either the school's Main Parking Lot or the Westmoreland Parking Lot. Security is provided in both lots to help ensure the safety of our students and their vehicles. The CHS Board of Directors has set the parking fee for the 2016-2017 school year at \$285. Seniors and juniors will be able to purchase parking passes during Student Orientation. Sophomores who have a current driver's license may purchase any remaining parking passes after school has begun. Freshmen are not allowed to park in either lot and should plan accordingly. If you have questions about student parking, please contact Dr. Tom Eldringhoff, assistant principal for discipline.

**Payment for Orientation Fees:** A student may pay for all orientation expenses with one check, or with Visa or Mastercard.

**FIRST DAY FOR 8TH AND 9TH GRADERS:** Friday, August 5, will be a special day of school designed exclusively for our 8th and 9th graders. All other students are not to report to school. This special day for new students is designed to acquaint them with CHS in an atmosphere that is less hectic than a day with the full student body in attendance. We will begin with a liturgy for all 8th and 9th graders at 7:30 a.m., then run a full schedule of shortened classes. Lunch will be served. Students must have their Student ID/debit cards (that they will have received at Orientation) for this first day of school. The day will conclude with "Bear Camp" and students will be dismissed at about 2:45 p.m.

**OFFICE HOURS:** Our office hours on school days are 7 a.m. until 4 p.m.

**DAILY TONE SCHEDULE:**

Warning Tones	7:25 & 7:28
1st Period	7:30 - 8:20
2nd Period	8:25 - 9:15
Announcements	9:20 - 9:22
3rd Period	9:22 - 10:12
4th Period	10:17 - 11:07
5th Period	11:12 - 12:02
6th Period	12:07 - 12:57
7th Period	1:02 - 1:52
8th Period	1:57 - 2:47

**CHANGE OF ADDRESS AND / OR PHONE NUMBERS:** Should your home or business phone numbers change or if you move, please email this information along with your son's name to Kathie Smith at [ksmith@catholichigh.org](mailto:ksmith@catholichigh.org) as soon as possible so that this information is available to appropriate school officials.

**SCHOOL DANCES:** The CHS and SJA student councils sponsor several dances throughout the school year. Some of the dances are for CHS and SJA students only and some are for either CHS or SJA students and a date. For the dances held at CHS, parents may drop off their children in the Main Parking Lot on Claycut Drive. All students that are driving to the dance must park in the Westmoreland lot. Security will be provided.

Once again this school year, following all dances at CHS, we will run pickup carpool lines in the senior parking lot. Due to the back-up of traffic on Claycut Drive and Acadian Thruway at the conclusion of dances, we ask parents to be prompt in picking up their son and move as quickly as possible through the lines. We also ask

that you carefully follow the directions of faculty members on duty in the parking lot.

The first casual dance of the year will take place on Friday, August 19, from 8 p.m. until 10:00 p.m. This dance is for CHS and SJA students only. The Homecoming Dance is scheduled for October 8 and is only for CHS students and their dates.

**CHS ATHLETICS:** Students interested in participating in the CHS interscholastic or intramural athletic programs should listen to the school's daily announcements for information. If you have any questions about interscholastic athletics at CHS, please contact Mr. J.P. Kelly, athletic director. Questions about intramural athletics should be directed to Mr. Tim LaBauve, intramural director.

**COMMUNICATION WITH PARENTS:** Catholic High utilizes a text messaging system to communicate with students, parents, and faculty when situations require timely information be disseminated. We will continue to utilize a voice message system when circumstances require a lengthier message. As always, email will continue to be used with general information.

**CANCELLATION OF SCHOOL DAY:** In case of a general emergency in which school may be called off due to dangerous weather or other circumstances, CHS will follow the action taken by the East Baton Rouge Parish public high schools. Students and parents should use radio or TV news reports concerning whether or not schools will be open. The information will also be sent through the text messaging system or through voice mail and will be posted on the Catholic High website, along with social media, as soon as possible in the given emergency.

**CARPOOL:** For safety reasons, we ask that you not drop off any student in the Main Parking Lot on Claycut before school. School proctors located in the main parking lot are instructed not to allow drop off in this area. In the morning, students may be dropped off in front of the main entrance on Hearthstone or in front of the Union entrance on Claycut. In the afternoon, we ask that you wait until at least 3 p.m. to pick up your son. You may pick up your son in front of the main entrance on Hearthstone or in front of the Union entrance on Claycut Drive. Please do not pick up students in the main lot or in the Westmoreland parking lot.

Your cooperation in this matter is needed to ensure the safety of our students. Thanks in advance for your help.

**ACT PREPARATION CLASS:** Our next ACT Preparation Class will be offered on Saturday, August 20, and Saturday, August 27. If interested, your son may choose one of these two dates to attend the class. A flier is included in this newsletter with more details about this course, which has been quite beneficial for many of our students. Please e-mail Mrs. Christy Kessler at [ckessler@catholichigh.org](mailto:ckessler@catholichigh.org) if you have any questions about the course.

**MEN'S CLUB STAG BARBECUE:** The 81st Annual CHS Men's Club Stag Barbecue will be held on Saturday, August 27. The barbecue will be held from 6-10 p.m. in the CHS gym. Take-outs are available from 5:30 to 7:30 p.m. Tickets are \$25 in advance or \$30 at the door. For ticket information, contact CHS at 383-0397. Please note that this event is not open to current students.

**ATHLETIC SPIRIT PASS (from J.P. KELLY):** The Catholic High Athletic Department is excited about the 2016-2017 school year, and will again offer students, parents, alumni and friends an athletic spirit pass. The goal of the pass is to build community and create an exciting home environment for our athletic teams. The pass will allow the purchaser admittance into all hosted regular season contests during our 2016-2017 sports seasons. Specifically, athletic spirit passes will be honored for the sports of football, swimming, basketball, wrestling, soccer, baseball, track, tennis, golf, and bowling events. Catholic High will host in excess of 100 events during the 2016-2017 seasons where the pass can be used. The price of the pass is **\$55.00 for students and \$75.00 for adults**. Students will be allowed to purchase spirit passes at orientation and information for parents and friends of Catholic High who would like to purchase passes will be coming soon. The first opportunity to use the pass will be Friday, September 9 when the football team takes on Zachary at Olympia Stadium. The cost of the pass is a significant savings for families compared to the cumulative entrance price for single events.

**Please note that the pass does not cover jamborees, playoffs, or away games.**

**STANDARDIZED TESTING:** For the second year, our standardized testing schedule will include both fall and spring standardized tests. In addition, this year we have added six days of special schedules prior to spring testing in which focused standardized test preparation will take place in the classroom. The test prep days are

noted on the attached school calendar. Please make note of our testing schedule so that you can plan accordingly for these important dates.

**Fall** – On October 17 and 18, 8<sup>th</sup>, 9<sup>th</sup>, and 10<sup>th</sup> grade students will take the computer-based Aspire test, taking two sections of the test each day. 11<sup>th</sup> grade students will take the PSAT on Wednesday, October 19.

**Spring** – On Tuesday, March 21, 9<sup>th</sup> grade students will take an age appropriate PSAT, and 10<sup>th</sup> grade students will take the ACT test provided by the Cambridge Educational Program. All juniors will take an official ACT test that will be reported to the college/university of their choice and this test will serve as their required junior ACT test. (Please see the Student Handbook for details). The cost of the ACT test will be included on juniors' fee bill during Orientation.

8<sup>th</sup> grade students will be on retreat this day and seniors will participate in another school related activity.

**THANK YOU:** I hope you and your son have a rewarding and positive experience at Catholic High during the 2016-2017 school year. Thank you for giving us the privilege of working with you and your son.

**Catholic High School  
Orientation Item List 2016-2017**

**STUDENTS ONLY ARE ALLOWED IN THE ORIENTATION AREAS**

The orientation process includes *fees and supplies* listed below. Students will pay for items at checkout with a check, cash or credit card. If paying by check, please leave the amount line blank (to be filled in at checkout); however, *for security reasons* PLEASE MAKE CHECK PAYABLE TO **CATHOLIC HIGH SCHOOL**. If your son has a previous balance on his account to be applied to the purchase he must give that information to the cashier when checking out.

Students **will not** be permitted to re-enter any of the orientation areas, including the checkout area, once checkout is complete. For exchanges, returns or to get assistance with other issues regarding orientation, students should come to the bookstore beginning Friday, August 5<sup>th</sup>.

Please contact Mrs. Pinney Johnson, [pjohnson@catholichigh.org](mailto:pjohnson@catholichigh.org), Bookstore Manager (383-0397) if you have questions regarding the *Bookstore Sales* process.\*

<b><u>ORIENTATION FEES:</u></b>	<b>I.D./Cafeteria Debit Card [REQUIRED] Minimum Amount</b>	<b>\$35.00</b>
	Lock [REQUIRED FOR INCOMING STUDENTS]	Single 6.00 Double 12.00
	Yearbook [OPTIONAL]	48.00
	Mailing Fee [OPTIONAL – 12 <sup>th</sup> ONLY]	6.00
	Parking Fee - Grades 11 <sup>th</sup> and 12 <sup>th</sup> Only [OPTIONAL]	285.00
	CPR Fee [REQUIRED FOR 9 <sup>th</sup> and 11 <sup>th</sup> ]	55.00
	ACT Fee [REQUIRED FOR 11 <sup>th</sup> ]	42.50
<b><u>BOOKS &amp; SUPPLIES:</u></b>		
<b>Accounting I</b>	<u>Accounting – One Semester Workbook Chapter 1-16</u>	40.00
<b>Accounting II</b>	<u>Accounting – Two Semester Workbook Chapters 1-24</u> (2-book set)	55.00
<b>English</b>	Vocabulary Workbooks – Grades 8-12	15.00
<b>Art I</b>	Art Supply Package	45.00
<b>Art II</b>	Art Supply Package	45.00
<b>Fine Arts Survey</b>	Art Supply Package	45.00
<b>Drawing and Painting</b>	Art Supply Package	25.00
<b>Sculpture</b>	Art Supply Package	25.00

<b>Latin AP</b>	<u>Vergil's Aeneid: Expanded Collection Boyd, Barbara</u>	43.00
	<u>Aeneid Stanley Lombardo</u>	15.00
	<u>College Caesar: Latin Text with Facing Vocab, Steadman Geoffrey</u>	10.00
	<u>Notebook Bundle for Caesar and Vergil</u>	18.00
<b>Spanish I</b>	<u>Avancemos: Cuaderno Level 1</u>	20.00
<b>Spanish II</b>	<u>Avancemos: Cuaderno Level II</u>	20.00
<b>Spanish AP</b>	<u>Language and Culture Exam Prep</u>	51.00
<b>Religion 8</b>	<u>The Church Through History</u>	30.00
<b>Religion I</b>	<u>Jesus Christ: God's Revelation to the World</u>	30.00
	<u>Catholic Youth Bible (New American Translation)</u>	25.00
<b>Religion II</b>	<u>Celebrating Sacraments</u>	24.00
	<u>Theology of the Body for Teenagers</u>	18.00
<b>Religion III</b>	<u>Your Life in Christ: Foundations of Catholic Morality</u>	30.00
	<u>Christian Moral Life: A Primary Source Reader</u>	30.00
<b>Religion IV LFA</b>	<u>The Catholic Spirit</u>	30.00
	<u>Faith and Film: Theological Themes at the Cinema</u>	24.00
<b>Religion IV D of J</b>	<u>Foundations of Catholic Social Teaching: Living as a Disciple of Christ</u>	30.00
<b>Religion IV EII</b>	<u>The Human Quest for God</u>	25.00
<b><u>OPTIONAL:</u></b>		
<b>Athletic Pass **</b>	Student	55.00
<b>Gym Shorts</b>	Mesh – no pockets	18.00
	Mesh – with pockets (Adult sm-xl)/(2X-4X)	25.00/ 28.00
<b>Gym Shirt</b>	Adult sizes small to x-large	15.00
	Adult sizes 2X and 4X available	18.00
<b>Gym Bags/Other</b>	Orange and Black Duffle	35.00
	Pencil Bag	5.00

***Parents!***

**Please allow us to dedicate  
our time to your son  
the 1<sup>st</sup> week following orientation.**

**You are invited to visit the Bookstore beginning Monday, August 15th**

\*Prices on this list are based on information available at the time of printing and are subject to change

\*\*For information regarding Athletic Passes please contact J.P. Kelly, [jkelly@catholichigh.org](mailto:jkelly@catholichigh.org)



<p><b>August 2016</b></p> <table border="1"> <thead> <tr> <th>M</th> <th>T</th> <th>W</th> <th>T</th> <th>F</th> </tr> </thead> <tbody> <tr> <td>1</td> <td>2</td> <td>3</td> <td>4</td> <td>5</td> </tr> <tr> <td>8</td> <td>9</td> <td>10</td> <td>11</td> <td>12</td> </tr> <tr> <td>15</td> <td>16</td> <td>17</td> <td>18</td> <td>19</td> </tr> <tr> <td>22</td> <td>23</td> <td>24</td> <td>25</td> <td>26</td> </tr> <tr> <td>29</td> <td>30</td> <td>31</td> <td></td> <td></td> </tr> </tbody> </table>	M	T	W	T	F	1	2	3	4	5	8	9	10	11	12	15	16	17	18	19	22	23	24	25	26	29	30	31			<p><b>January 2017</b></p> <table border="1"> <thead> <tr> <th>M</th> <th>T</th> <th>W</th> <th>T</th> <th>F</th> </tr> </thead> <tbody> <tr> <td>2</td> <td>3</td> <td>4</td> <td>5</td> <td>6</td> </tr> <tr> <td>9</td> <td>10</td> <td>11</td> <td>12</td> <td>13</td> </tr> <tr> <td>16</td> <td>17</td> <td>18</td> <td>19</td> <td>20</td> </tr> <tr> <td>23</td> <td>24</td> <td>25</td> <td>26</td> <td>27</td> </tr> <tr> <td>30</td> <td>31</td> <td></td> <td></td> <td></td> </tr> </tbody> </table>	M	T	W	T	F	2	3	4	5	6	9	10	11	12	13	16	17	18	19	20	23	24	25	26	27	30	31			
M	T	W	T	F																																																									
1	2	3	4	5																																																									
8	9	10	11	12																																																									
15	16	17	18	19																																																									
22	23	24	25	26																																																									
29	30	31																																																											
M	T	W	T	F																																																									
2	3	4	5	6																																																									
9	10	11	12	13																																																									
16	17	18	19	20																																																									
23	24	25	26	27																																																									
30	31																																																												
<p><b>September 2016</b></p> <table border="1"> <thead> <tr> <th>M</th> <th>T</th> <th>W</th> <th>T</th> <th>F</th> </tr> </thead> <tbody> <tr> <td></td> <td></td> <td></td> <td>1</td> <td>2</td> </tr> <tr> <td>5</td> <td>6</td> <td>7</td> <td>8</td> <td>9</td> </tr> <tr> <td>12</td> <td>13</td> <td>14</td> <td>15</td> <td>16</td> </tr> <tr> <td>19</td> <td>20</td> <td>21</td> <td>22</td> <td>23</td> </tr> <tr> <td>26</td> <td>27</td> <td>28</td> <td>29</td> <td>30</td> </tr> </tbody> </table>	M	T	W	T	F				1	2	5	6	7	8	9	12	13	14	15	16	19	20	21	22	23	26	27	28	29	30	<p><b>February 2017</b></p> <table border="1"> <thead> <tr> <th>M</th> <th>T</th> <th>W</th> <th>T</th> <th>F</th> </tr> </thead> <tbody> <tr> <td></td> <td></td> <td>1</td> <td>2</td> <td>3</td> </tr> <tr> <td>6</td> <td>7</td> <td>8</td> <td>9</td> <td>10</td> </tr> <tr> <td>13</td> <td>14</td> <td>15</td> <td>16</td> <td>17</td> </tr> <tr> <td>20</td> <td>21</td> <td>22</td> <td>23</td> <td>24</td> </tr> <tr> <td>27</td> <td>28</td> <td></td> <td></td> <td></td> </tr> </tbody> </table>	M	T	W	T	F			1	2	3	6	7	8	9	10	13	14	15	16	17	20	21	22	23	24	27	28			
M	T	W	T	F																																																									
			1	2																																																									
5	6	7	8	9																																																									
12	13	14	15	16																																																									
19	20	21	22	23																																																									
26	27	28	29	30																																																									
M	T	W	T	F																																																									
		1	2	3																																																									
6	7	8	9	10																																																									
13	14	15	16	17																																																									
20	21	22	23	24																																																									
27	28																																																												
<p><b>October 2016</b></p> <table border="1"> <thead> <tr> <th>M</th> <th>T</th> <th>W</th> <th>T</th> <th>F</th> </tr> </thead> <tbody> <tr> <td>3</td> <td>4</td> <td>5</td> <td>6</td> <td>7</td> </tr> <tr> <td>10</td> <td>11</td> <td>12</td> <td>13</td> <td>14</td> </tr> <tr> <td>17</td> <td>18</td> <td>19</td> <td>20</td> <td>21</td> </tr> <tr> <td>24</td> <td>25</td> <td>26</td> <td>27</td> <td>28</td> </tr> <tr> <td>31</td> <td></td> <td></td> <td></td> <td></td> </tr> </tbody> </table>	M	T	W	T	F	3	4	5	6	7	10	11	12	13	14	17	18	19	20	21	24	25	26	27	28	31					<p><b>March 2017</b></p> <table border="1"> <thead> <tr> <th>M</th> <th>T</th> <th>W</th> <th>T</th> <th>F</th> </tr> </thead> <tbody> <tr> <td></td> <td></td> <td>1</td> <td>2</td> <td>3</td> </tr> <tr> <td>6</td> <td>7</td> <td>8</td> <td>9</td> <td>10</td> </tr> <tr> <td>13</td> <td>14</td> <td>15</td> <td>16</td> <td>17</td> </tr> <tr> <td>20</td> <td>21</td> <td>22</td> <td>23</td> <td>24</td> </tr> <tr> <td>27</td> <td>28</td> <td>29</td> <td>30</td> <td>31</td> </tr> </tbody> </table>	M	T	W	T	F			1	2	3	6	7	8	9	10	13	14	15	16	17	20	21	22	23	24	27	28	29	30	31
M	T	W	T	F																																																									
3	4	5	6	7																																																									
10	11	12	13	14																																																									
17	18	19	20	21																																																									
24	25	26	27	28																																																									
31																																																													
M	T	W	T	F																																																									
		1	2	3																																																									
6	7	8	9	10																																																									
13	14	15	16	17																																																									
20	21	22	23	24																																																									
27	28	29	30	31																																																									
<p><b>November 2016</b></p> <table border="1"> <thead> <tr> <th>M</th> <th>T</th> <th>W</th> <th>T</th> <th>F</th> </tr> </thead> <tbody> <tr> <td></td> <td>1</td> <td>2</td> <td>3</td> <td>4</td> </tr> <tr> <td>7</td> <td>8</td> <td>9</td> <td>10</td> <td>11</td> </tr> <tr> <td>14</td> <td>15</td> <td>16</td> <td>17</td> <td>18</td> </tr> <tr> <td>21</td> <td>22</td> <td>23</td> <td>24</td> <td>25</td> </tr> <tr> <td>28</td> <td>29</td> <td>30</td> <td></td> <td></td> </tr> </tbody> </table>	M	T	W	T	F		1	2	3	4	7	8	9	10	11	14	15	16	17	18	21	22	23	24	25	28	29	30			<p><b>April 2017</b></p> <table border="1"> <thead> <tr> <th>M</th> <th>T</th> <th>W</th> <th>T</th> <th>F</th> </tr> </thead> <tbody> <tr> <td>3</td> <td>4</td> <td>5</td> <td>6</td> <td>7</td> </tr> <tr> <td>10</td> <td>11</td> <td>12</td> <td>13</td> <td>14</td> </tr> <tr> <td>17</td> <td>18</td> <td>19</td> <td>20</td> <td>21</td> </tr> <tr> <td>24</td> <td>25</td> <td>26</td> <td>27</td> <td>28</td> </tr> </tbody> </table>	M	T	W	T	F	3	4	5	6	7	10	11	12	13	14	17	18	19	20	21	24	25	26	27	28					
M	T	W	T	F																																																									
	1	2	3	4																																																									
7	8	9	10	11																																																									
14	15	16	17	18																																																									
21	22	23	24	25																																																									
28	29	30																																																											
M	T	W	T	F																																																									
3	4	5	6	7																																																									
10	11	12	13	14																																																									
17	18	19	20	21																																																									
24	25	26	27	28																																																									
<p><b>December 2016</b></p> <table border="1"> <thead> <tr> <th>M</th> <th>T</th> <th>W</th> <th>T</th> <th>F</th> </tr> </thead> <tbody> <tr> <td></td> <td></td> <td></td> <td>1</td> <td>2</td> </tr> <tr> <td>5</td> <td>6</td> <td>7</td> <td>8</td> <td>9</td> </tr> <tr> <td>12</td> <td>13</td> <td>14</td> <td>15</td> <td>16</td> </tr> <tr> <td>19</td> <td>20</td> <td>21</td> <td>22</td> <td>23</td> </tr> <tr> <td>26</td> <td>27</td> <td>28</td> <td>29</td> <td>30</td> </tr> </tbody> </table>	M	T	W	T	F				1	2	5	6	7	8	9	12	13	14	15	16	19	20	21	22	23	26	27	28	29	30	<p><b>May 2017</b></p> <table border="1"> <thead> <tr> <th>M</th> <th>T</th> <th>W</th> <th>T</th> <th>F</th> </tr> </thead> <tbody> <tr> <td>1</td> <td>2</td> <td>3</td> <td>4</td> <td>5</td> </tr> <tr> <td>8</td> <td>9</td> <td>10</td> <td>11</td> <td>12</td> </tr> <tr> <td>15</td> <td>16</td> <td>17</td> <td>18</td> <td>19</td> </tr> <tr> <td>22</td> <td>23</td> <td>24</td> <td>25</td> <td>26</td> </tr> <tr> <td>29</td> <td>30</td> <td>31</td> <td></td> <td></td> </tr> </tbody> </table>	M	T	W	T	F	1	2	3	4	5	8	9	10	11	12	15	16	17	18	19	22	23	24	25	26	29	30	31		
M	T	W	T	F																																																									
			1	2																																																									
5	6	7	8	9																																																									
12	13	14	15	16																																																									
19	20	21	22	23																																																									
26	27	28	29	30																																																									
M	T	W	T	F																																																									
1	2	3	4	5																																																									
8	9	10	11	12																																																									
15	16	17	18	19																																																									
22	23	24	25	26																																																									
29	30	31																																																											
<p><b>Important Dates 2016</b></p> <ul style="list-style-type: none"> <li>Aug. 1-2 Faculty &amp; Staff Prof. Development</li> <li>Aug. 3-4 Student Orientation</li> <li>Aug. 5 1st day of school for 8th &amp; 9th grades</li> <li>Aug. 8 1st day of school for all students</li> <li>Sept. 5 Labor Day holiday</li> <li>Sept. 6 Prof. Dev. (no school for students)</li> <li>Sept. 26 Faculty &amp; Staff Day of Experience</li> <li>Oct. 7 1st quarter ends</li> <li>Oct. 16-17 Senior Retreat</li> <li>Nov. 21 - 25 Thanksgiving holidays</li> <li>Dec. 13-16 1st semester examinations</li> <li>Dec. 16 1st semester ends</li> <li>Dec. 19 - Jan. 2 Christmas holidays</li> </ul>	<p><b>Important Dates 2017</b></p> <ul style="list-style-type: none"> <li>Jan. 3-4 Faculty &amp; Staff Development</li> <li>Jan. 5 2nd semester classes begin</li> <li>Jan. 16 Martin Luther King, Jr. holiday</li> <li>Feb. 27-Mar. 3 Mardi Gras holidays</li> <li>March 6 Prof. Dev. (no school for students)</li> <li>March 10 3rd quarter ends</li> <li>April 3 Faculty &amp; Staff Retreat</li> <li>April 14-21 Easter holidays</li> <li>May 5-10 Senior final examinations</li> <li>May 20 Graduation</li> <li>May 22-25 2nd semester examinations</li> <li>May 25 2nd semester ends</li> <li>May 26 Record Day</li> </ul>																																																												

**Legend:** Circles indicate holidays for students and faculty  
 Squares indicate holidays for students; professional development for faculty and staff

# ACT PREPARATION CLASS

Where: Brother Gordian Udinsky Science Center Room 271 at Catholic High

When: Saturday, August 20 from 9 a.m. until 1:30 p.m. **OR**

Saturday, August 27 from 9 a.m. until 1:30 p.m.

Cost: \$95 (covers book and all materials; \$50 is non-refundable)

It has been proven that test anxiety, knowledge of test format and content, and knowledge of proper test-taking skills and strategies can impact a student's score on a standardized test such as the ACT. Did you ever wonder why your test scores were not as high as you expected? Learn to do your best on the ACT.

This class will present:

- Ways to reduce test anxiety.
- Procedures for being mentally, psychologically and physically prepared for the test.
- Helpful hints for testing day.
- Content summary for the ACT.
- Examples of problems that frequently appear on the ACT.
- Strategies that will improve scores on any standardized test.
- Specific strategies for the items on the ACT.
- Scoring information for the ACT.
- Supplementary materials to guide study and final preparation for the ACT.
- Classroom instruction concluded with a "mock test."

Presenter: Mrs. Christy Kessler (ckessler@catholichigh.org)

\*\*Bring a bag lunch due to time limitations.

~~~~~  
Please detach this form and return to Mrs. Hodges in the Main Office by Wednesday, August 17.

## REGISTRATION FORM - ACT PREPARATION CLASS

Please register \_\_\_\_\_ for the ACT Preparation Class.

\_\_\_\_\_ Saturday, August 20 from 9 a.m. until 1:30 p.m. **OR**

\_\_\_\_\_ Saturday, August 27 from 9 a.m. until 1:30 p.m.

Parent's e-mail address (please print) \_\_\_\_\_

Please make checks payable to *Catholic High School*.

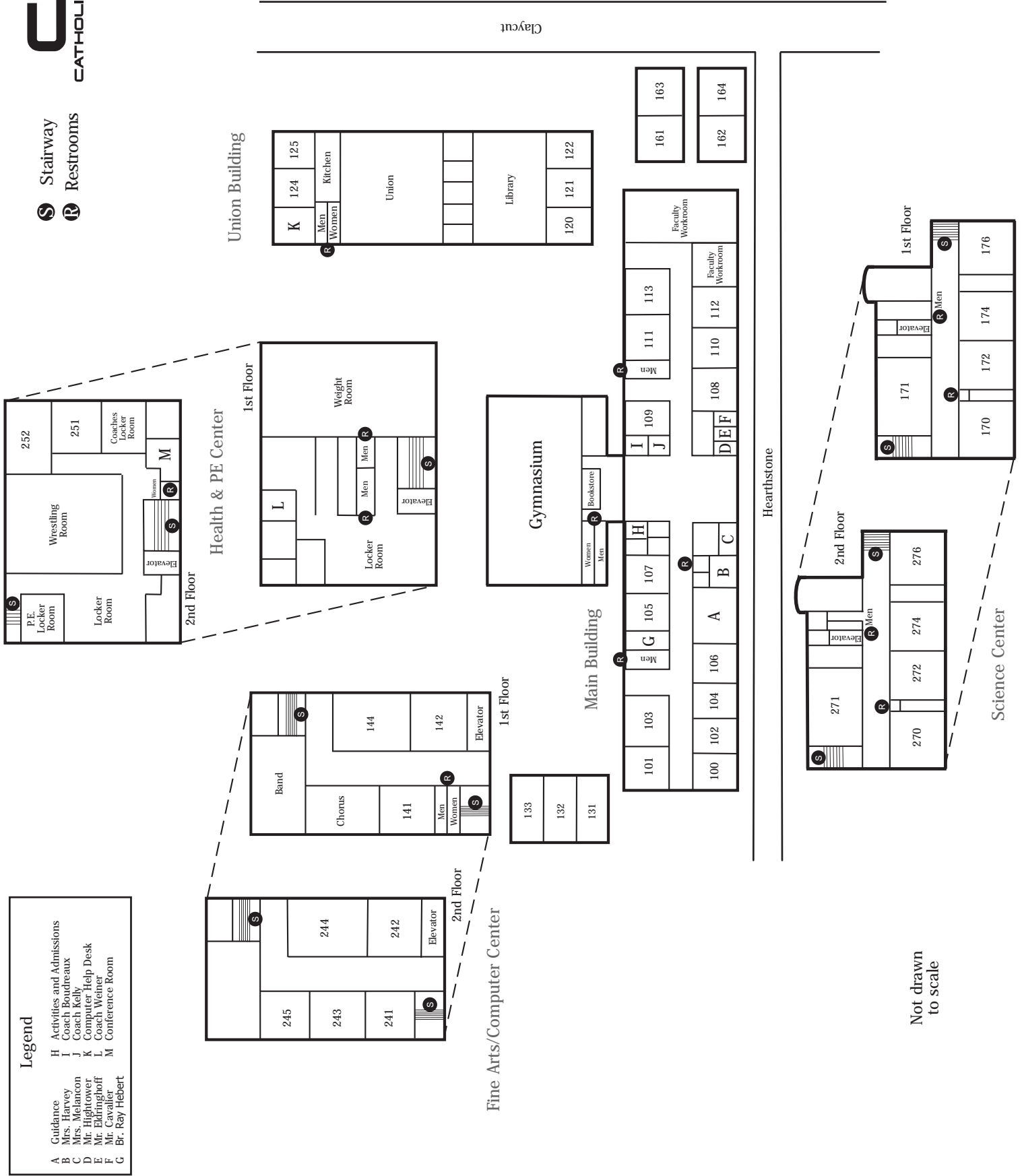
SCHEDULE FOR: \_\_\_\_\_

Use schedule from orientation.  
Only classes for Semester 1 (S1) meet today.  
Classes at SJA do not meet today.

| <u>Period</u>              | <u>Time</u> | <u>Subject</u> | <u>Teacher</u> | <u>Room</u> |
|----------------------------|-------------|----------------|----------------|-------------|
| Assembly (Gym) 3:45 - 4:15 |             |                |                |             |
| (A) 1st                    | 4:20 - 4:27 | _____          | _____          | _____       |
| (B) 2nd                    | 4:32 - 4:39 | _____          | _____          | _____       |
| (C) 3rd                    | 4:44 - 4:51 | _____          | _____          | _____       |
| Assembly (Gym) 4:56 - 5:26 |             |                |                |             |
| (D) 4th                    | 5:31 - 5:38 | _____          | _____          | _____       |
| (E) 5th                    | 5:43 - 5:50 | _____          | _____          | _____       |
| (F) 6th                    | 5:55 - 6:02 | _____          | _____          | _____       |
| (G) 7th                    | 6:07 - 6:14 | _____          | _____          | _____       |
| (H) 8th                    | 6:19 - 6:26 | _____          | _____          | _____       |

**S** Stairway  
**R** Restrooms

| Legend |                           |
|--------|---------------------------|
| A      | Guidance                  |
| B      | Mrs. Harvey               |
| C      | Mr. Melancon              |
| D      | Mr. Hightower             |
| E      | Mr. Eldringhoff           |
| F      | Mr. Cavalier              |
| G      | Br. Ray Hebert            |
| H      | Activities and Admissions |
| I      | Coach Boudreaux           |
| J      | Coach Kelly               |
| K      | Computer Help Desk        |
| L      | Coach Weiner              |
| M      | Conference Room           |



Claycut

Hearthstone

Not drawn to scale

Tired of spending your son's future inheritance on school clothes?

Wondering what to do with the school clothes he has outgrown?

Then join us at...

# The Bears' Bin

**Friday, July 29th 4:30 — 7:00 p.m.**

Drop off your donations in Senior Lot.

*(CHS "dress code approved" shirts, pants, belts, and suits only. No shoes, please.)*

**Saturday, July 30th 8:00 — 11:00 a.m.**

Come to the *CHS library* to browse through what we have collected.

**NO MONEY NECESSARY!**

*Take what you need. Need what you take.*

All remaining clothing will be donated to St. Vincent de Paul Society.

# PAGE 32

## The Fund for Catholic High School



A PRESENTATION REGARDING  
THE 2016-17 PARENTS ANNUAL GIVING EVENT

### **PAGE 32 Information Mandatory Meetings**

Reminder postcards will be mailed in early August to parents of all incoming 8<sup>th</sup> and 9<sup>th</sup> grade students and parents of 10<sup>th</sup>, 11<sup>th</sup> or 12<sup>th</sup> grade students new to CHS.

### Meeting Options

**Sunday, August 21, 5 – 6 p.m., CHS Union**

**Wednesday, August 24, 5:30 – 6:30 p.m., CHS Union**

- At least one parent per family must attend
- A member of the CHS Administration will contact those not in attendance
- Personalized PAGE packets will be distributed at the meetings



**CHS Office of Advancement | (225) 389-0978**

[www.catholichigh.org](http://www.catholichigh.org)

**Director of Advancement Jamie Segar '90 | [jsegar@catholichigh.org](mailto:jsegar@catholichigh.org)**

**Associate Director of Advancement Kate Brady | [kbrady@catholichigh.org](mailto:kbrady@catholichigh.org)**